



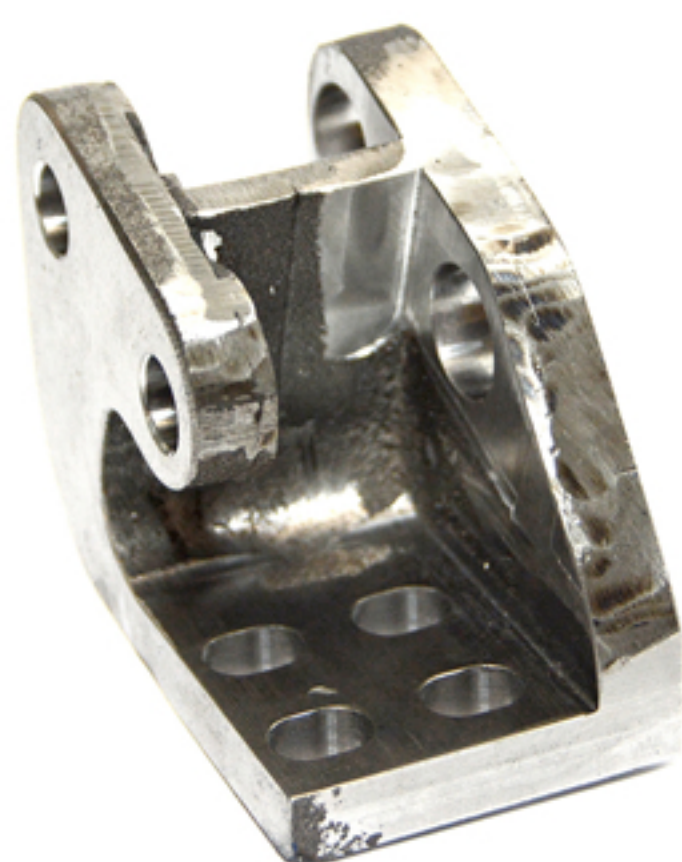
HELMET

MACHINING SERVICES
FOR ALL INDUSTRIES

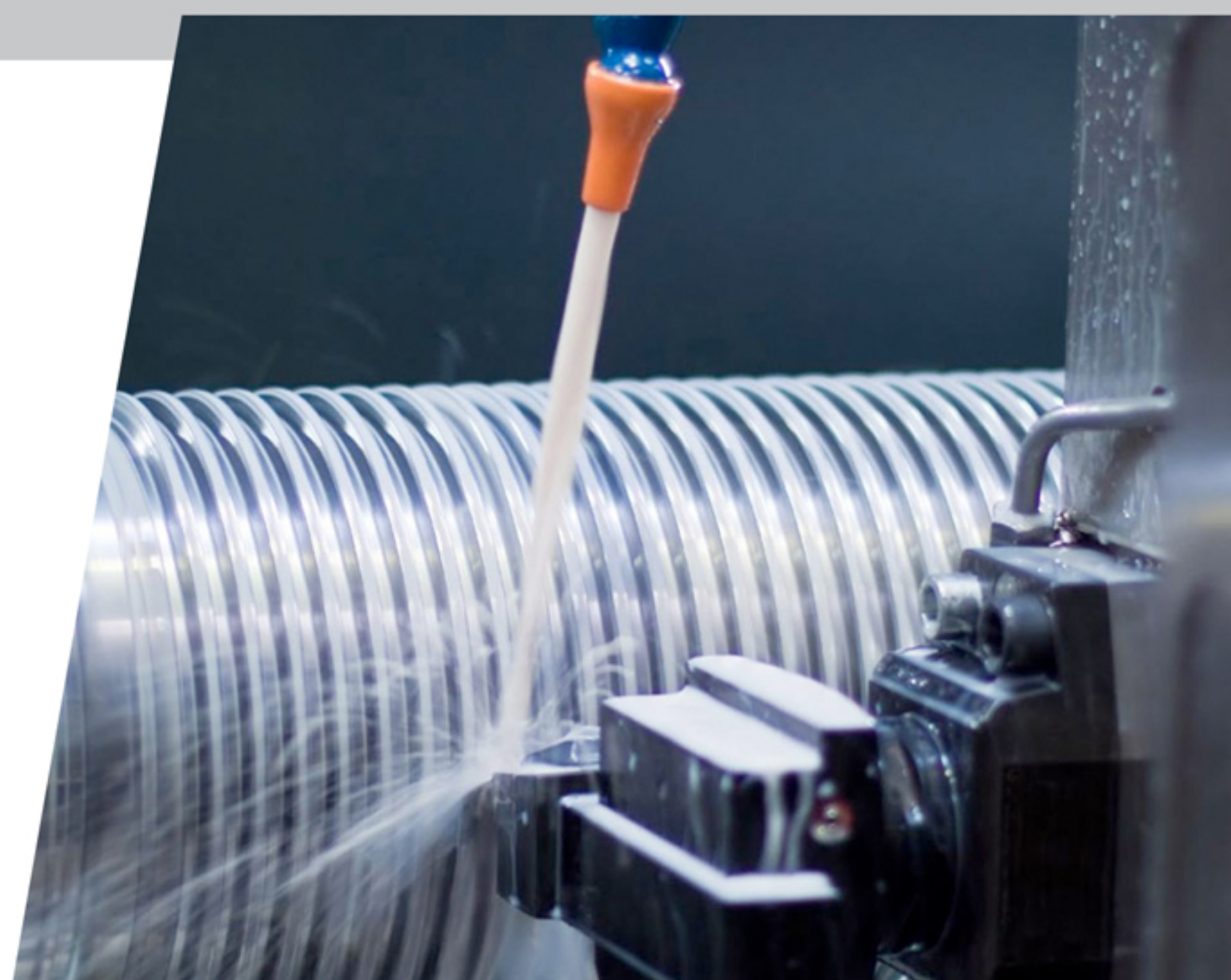


Why should You choose Helmet?

Our company stands out because of well-established experience in machining. We're a family company which has been helping our clients from generation to generation since 1978. We guarantee our clients experience, professionalism and individual approach. Since the 1990's we have been providing parts to transport companies across Poland. We also co-operate with metallurgic industry, food industry and road industry companies. Our clients are both Polish and foreign companies, e.g. I O-I Europe.



We make all kinds of machine parts, specialized tools and technological tools. We also offer processing of castings and forgings. We have a machine park with CNC lathes, CNC mills, longitudinal automatic lathes, conventional lathes, milling machines, grinders (universal, to the surface, centerless). Meeting the expectations of our clients, we're investing in staff development, innovative technologies and software.



How we gain trust? ☆



Meeting the deadlines



Precision



New technologies
implementation



Highly qualified staff





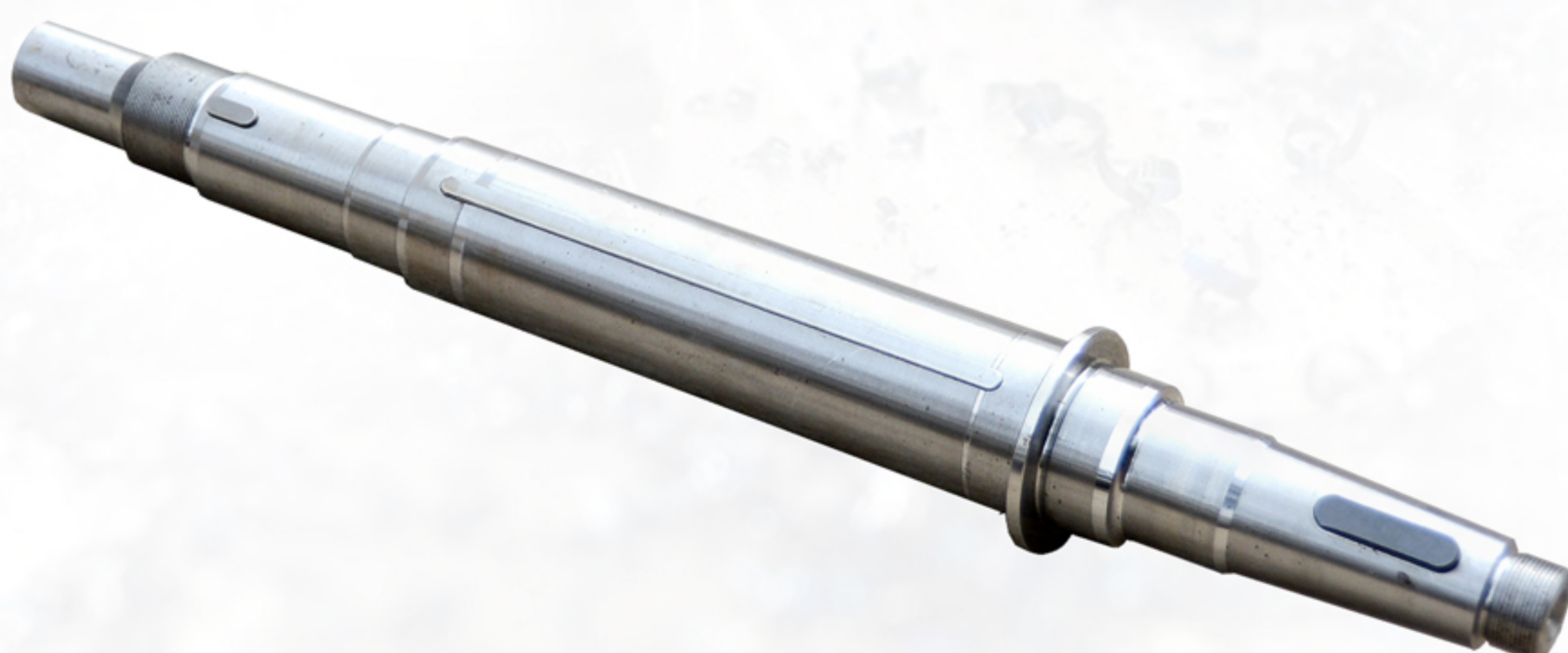
What do we have to offer to your company?

We specialize in the machining of materials such as:

- ✓ steel
- ✓ cast iron
- ✓ cast
- ✓ non-ferrous metals
- ✓ plastics

On request, we make a technical documentation of entrusted elements in the form of technical drawings and 3D projects.

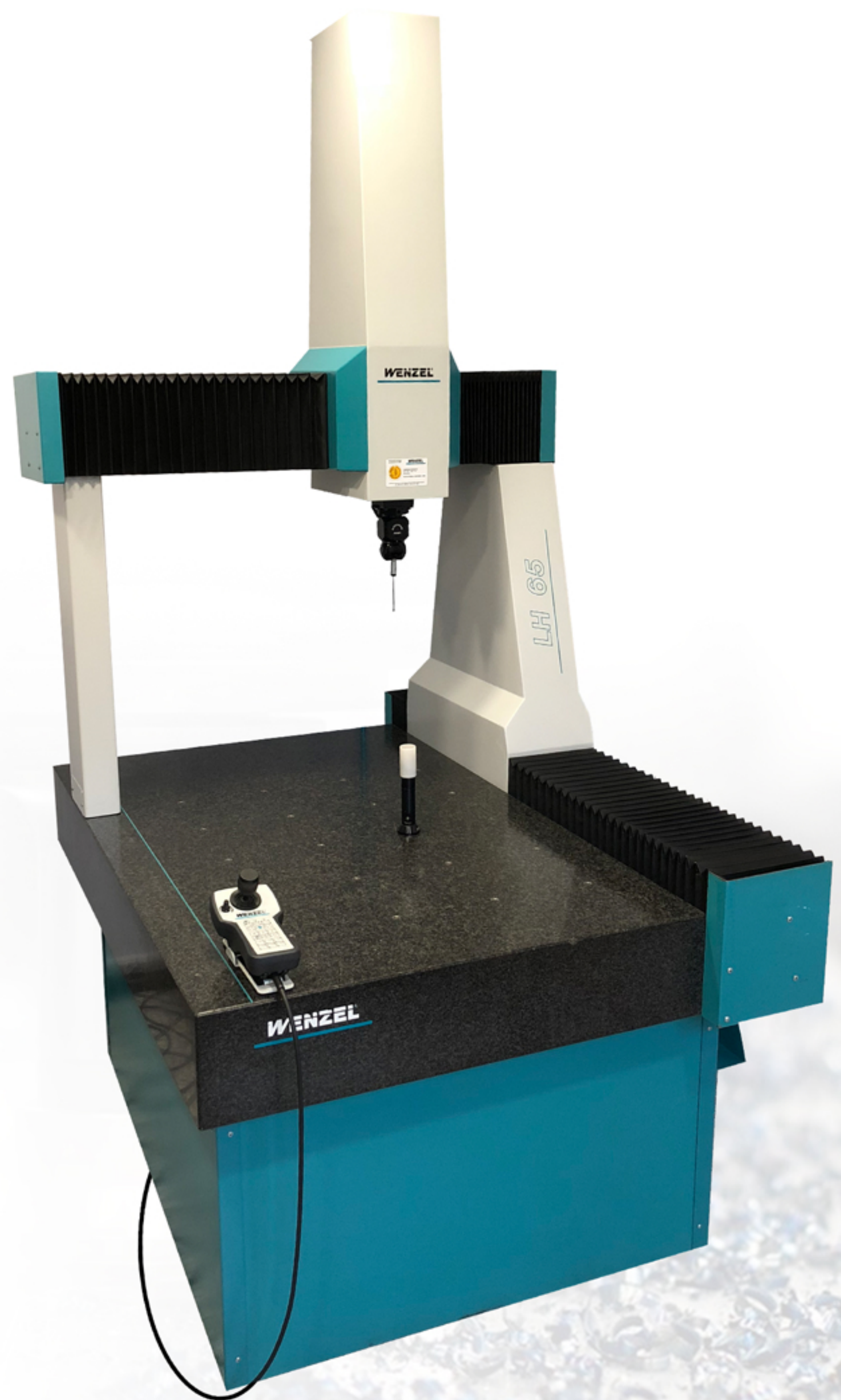
We produce spare parts for maintenance departments.



Highest standard of quality



We are in possession of precise **WENZEL LH65** measuring machine, which allows us to provide the highest quality of completed components.





Which machines are used?

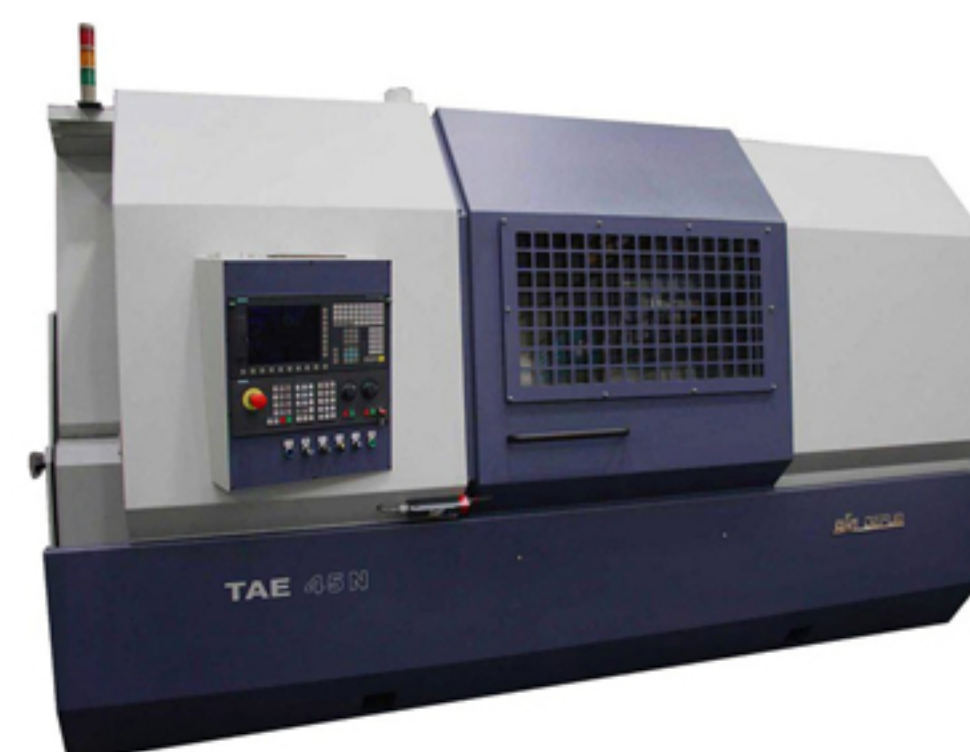


DOOSAN DNM-500 3-axis CNC milling machine

3-axis CNC milling machine that allows the tooling of elements up to 1020 x 540 x 510 mm. It is characterized by high reliability and precision.

CNC lathe TAE 45N ANDRYCHÓW

CNC lathe, with the rolling range from \varnothing 25 to \varnothing 60 from the rod and from \varnothing 25 to \varnothing 350 in the holder. It gives the possibility of efficient processing of components up to 1 metre long.



CNC lathe CKZ-42 BAROSZ-GWIMET

High-performance CNC lathe with \varnothing 42 spindle passage, intended for machining elements 200 mm long, with a diameter of up to \varnothing 200.

DECO longitudinal machine 2000 TORNOS 25

Longitudinal machine with 24 programmable axes and driven tools. Enables processing of elements from \varnothing 3 to \varnothing 25, up to 1 m long.



Range of activities



Turning → from \varnothing 3 to \varnothing 350, max. length 1500 mm

Milling → max. height 350 mm, max. length 1020 mm, max. width 500 mm

Grinding → from \varnothing 5 to \varnothing 200 mm, max. length 800 mm

Turning on a longitudinal machine → from \varnothing 3 to \varnothing 25 mm, max. length 170 mm



We provide machining services performed either using CNC machines or traditional machine tools.



OUR PLANS

In order to develop our company we are planning to buy state-of-the-art machines and software. As part of the project we'd like to buy a DNM5700 machining center, PUMA GT2100M lathe and a WORKLINE 410.280GA band saw.



Zakład Produkcyjno- Usługowy HELMET Jacek Zając
ul. Heleny Modrzejewskiej 5, 62-020 Swarzędz



+48 662 626 931



biuro@zpu-helmet.pl



zpu-helmet.pl